



Le monde du lait dans l'UE – entre PAC et Green Deal

Swissmilk Milchforum, 25. März
2021, Bulle/ online, Schweiz / EU





“Our goal is to reconcile the economy with our planet, to reconcile the way we produce and the way we consume with our planet and to make it work for our people.”

Ursula von der Leyen

President of the European Commission

« Notre objectif est de concilier l'économie avec notre planète,
De réconcilier la manière dont nous produisons et la manière dont nous
consommons avec notre planète,
et de s'assurer que cela fonctionne pour nos populations. »

Membres EDA



CONNECT
TO THE
WORLD
OF DAIRY

- Associations nationales de **21 Etats** Members de l'UE (Union Européenne)

Coopératives et transformateurs privés



Euromilk

connect to the world of dairy

Welcome to Euromilk!

Please make your choice between the European Dairy Association, European Whey Processors Association and the Assifonte websites



Notre Praesidium EDA 2020 – 2022 (2021)



European Dairy Platform





The Power of EU Dairy

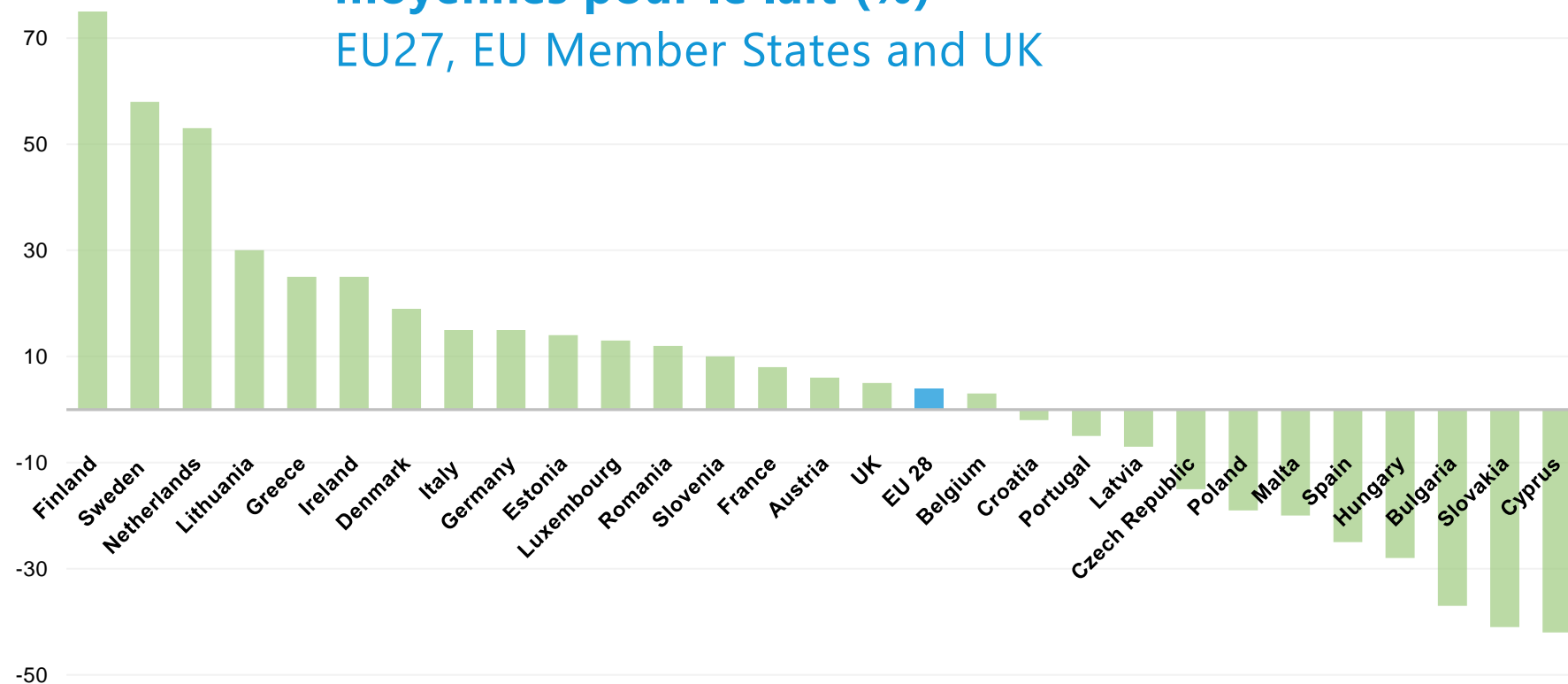


L'importance du secteur laitier Européen



Dérogation aux recommandations alimentaires moyennes pour le lait (%)

EU27, EU Member States and UK



Taux d'auto-provisionnement ¹ et principaux produits laitiers importés ²

Canada	96%				
USA	104%				
Mexico	82%				

Brazil	99%				
Argentina	120%				
Uruguay	197%				
Paraguay	99%				
Chile	95%				
Peru	88%				
Costa Rica	109%				

Belarus	240%				
Georgia	88%				
Iran	103%				
Kazakhstan	96%				
Norway	103%				
Russia	87%				
Saudi Arabia	52%				
Serbia	103%				
Switzerland	108%				
Turkey	100%				
Ukraine	106%				

Algeria	51%				
Egypt	86%				
Kenya	99%				
Morocco	85%				
Senegal	66%				
South Africa	104%				

China	80%				
Hong Kong					
India	100%				
Indonesia	43%				
Japan	74%				
Malaysia	8%				
South Korea	63%				
Philippines	2%				
Singapore					
Sri Lanka	44%				
Taiwan	27%				
Thailand	55%				
Vietnam	31%				

Australia	127%				
New Zealand	880%				

¹ Source: IFCN ² Source: Global Trade Atlas

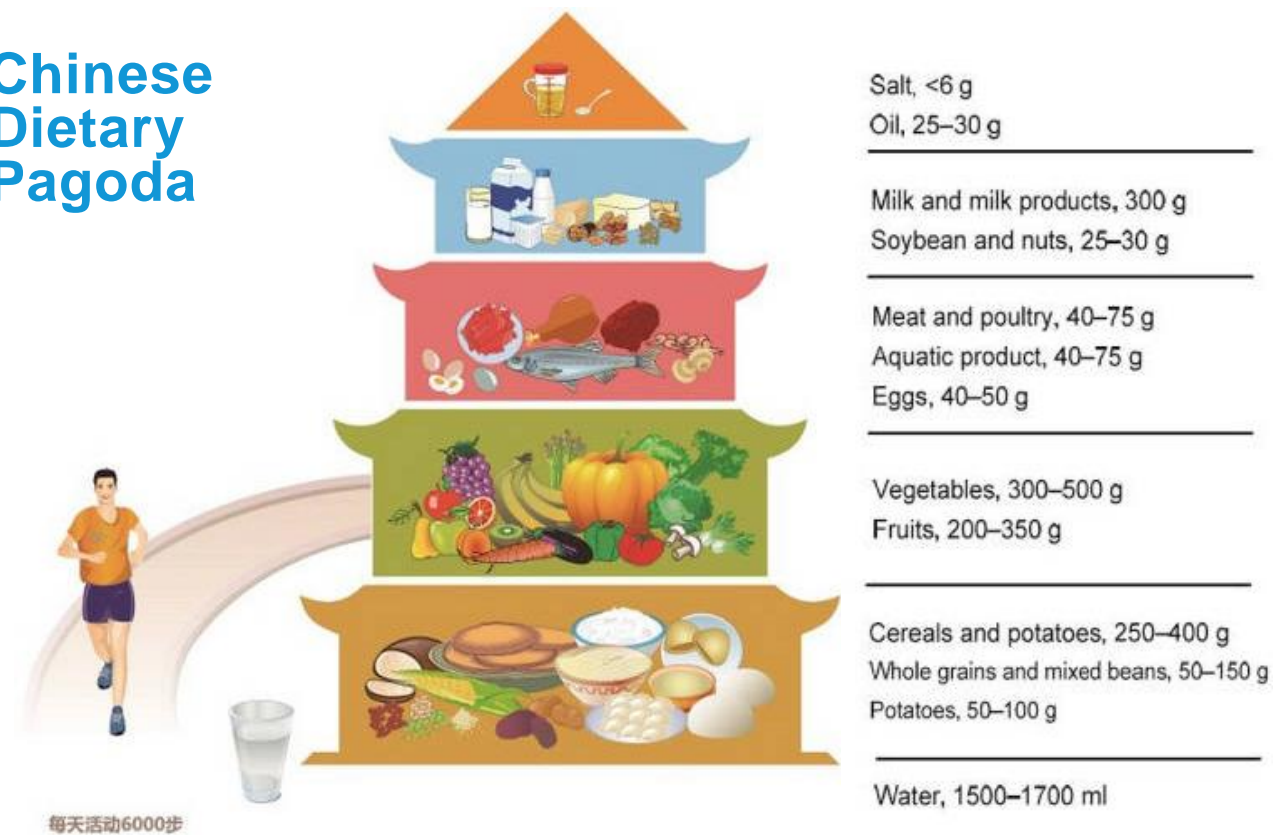


Chinese Dietary Pagoda



The Chinese Nutrition Society. The Food Guide Pagoda for Chinese Residents; 2016 (in Chinese)

Chinese Dietary Pagoda



每天活动6000步

The Chinese Nutrition Society. The Food Guide Pagoda for Chinese Residents; 2016 (in Chinese)

La Commission européenne et le cadre de la nouvelle PAC (politique agricole commune)





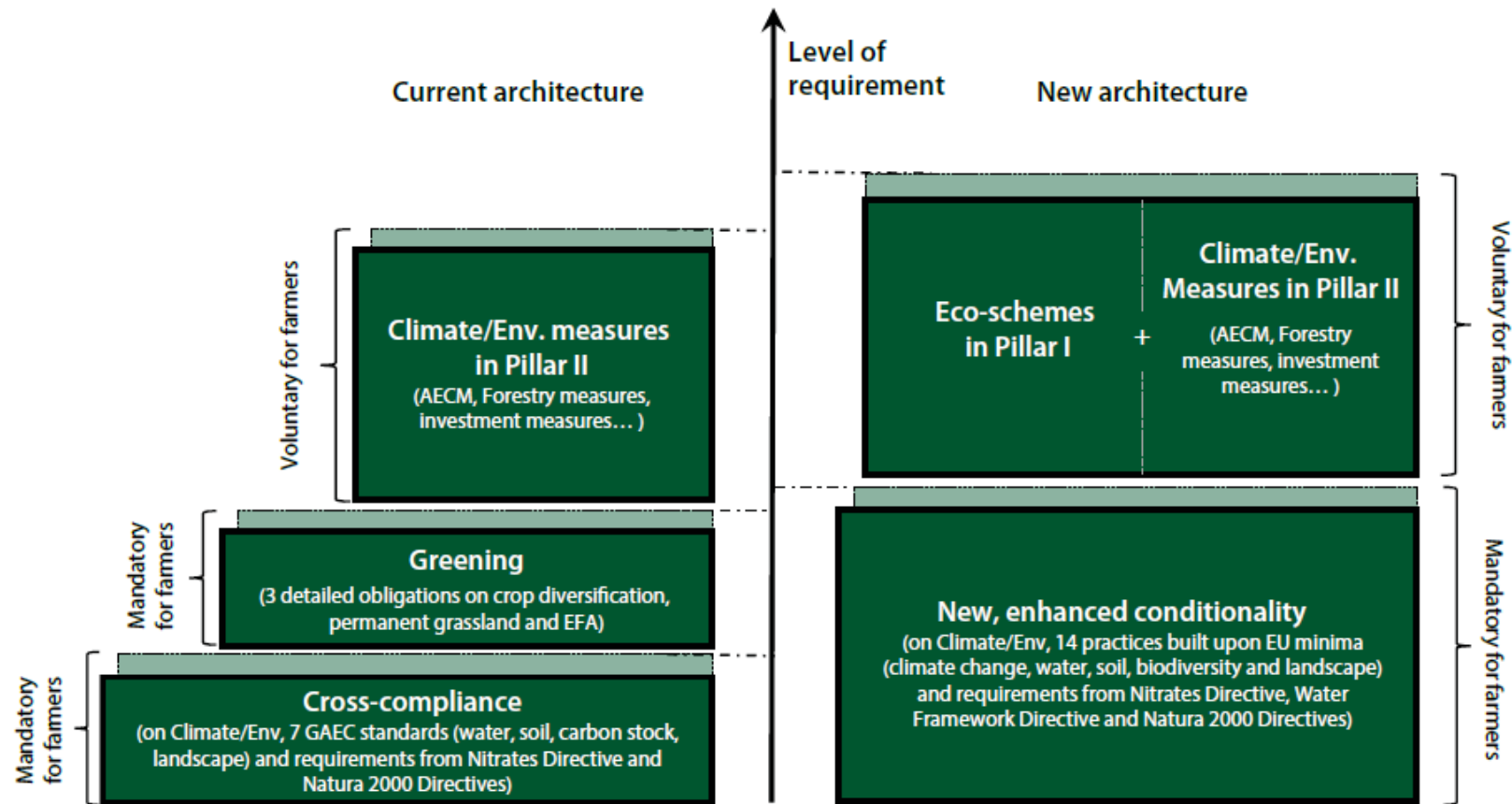
Bon état agricole et écologique (GAEC)

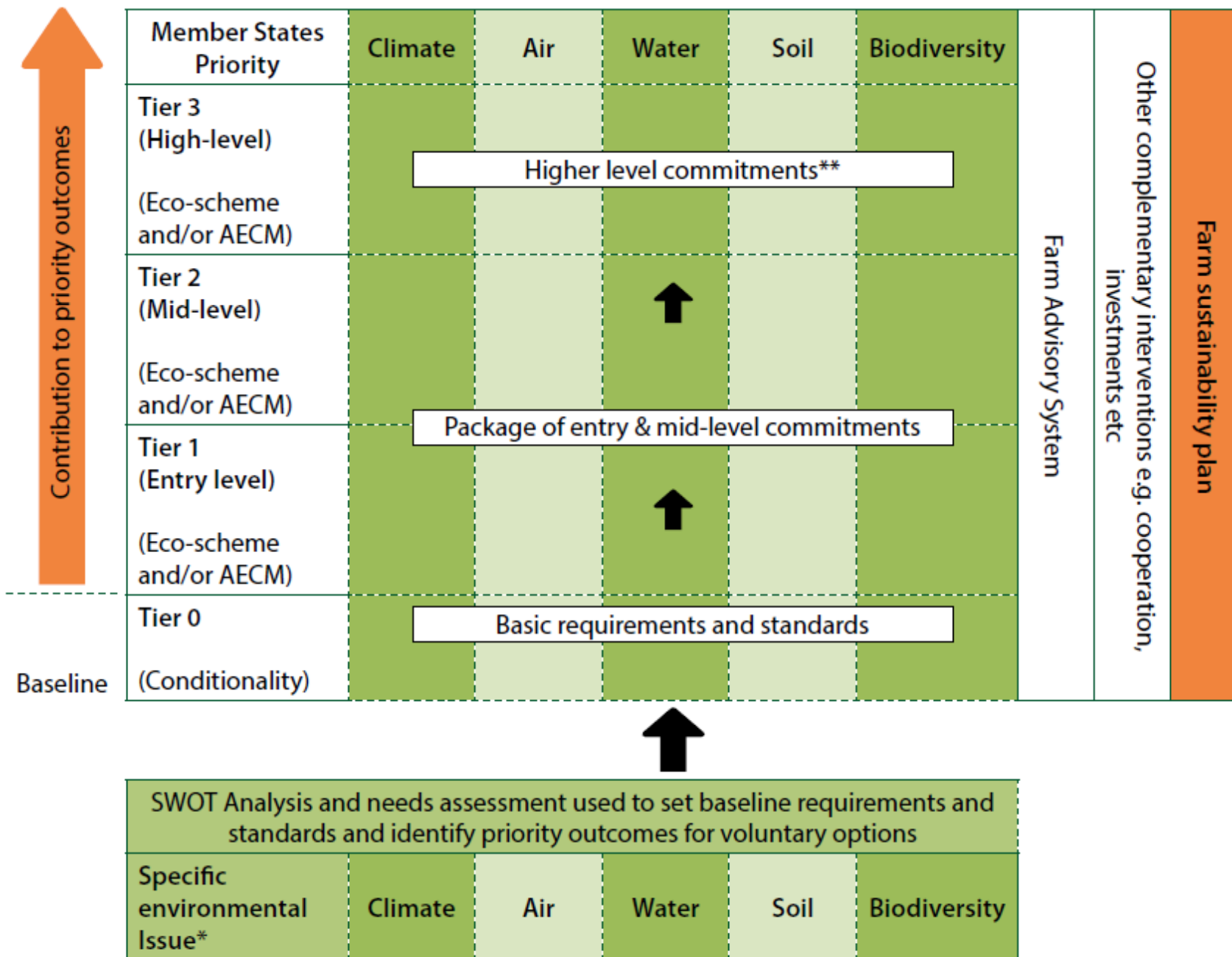
[Good agricultural and environmental condition - GAEC]

THE 9 CAP OBJECTIVES



: COMPARISON OF THE CAP'S CURRENT AND PROPOSED NEW GREEN ARCHITECTURE





: DIFFERENCES BETWEEN ECO-SCHEMES AND PILLAR 2 AGRI-ENVIRONMENTAL MEASURES

	PILLAR 1 ECO-SCHEME: SCHEMES FOR THE CLIMATE AND THE ENVIRONMENT (ART. 28)²	PILLAR 2 AEEM: ENVIRONMENT, CLIMATE AND OTHER MANAGEMENT COMMITMENTS (ART. 65)²
Beneficiaries	'Genuine' farmers	Farmers and land managers, collective contracts possible
Fund	100% EU financed (EAGF)	EU and nationally co-financed (EAFRD)
Focus	Agricultural activities delivering CAP Specific objectives d-f	Environment, climate and other management commitments delivering CAP Specific objectives d-f
Duration	Annual, possibly multiannual	Multiannual up to 5-7 years or more
Payment calculation	Full or partial compensation for costs incurred/income foregone (including opportunity costs) as for AEEM, or Fixed top-up payment to the basic income support (based on Member State justification)	Full or partial compensation for costs incurred/income foregone (including opportunity costs)
Payment basis	Annual, per hectare	Per hectare, head of livestock, number of trees etc., annual flat-rate or as a one-off payment per unit
Eligibility criteria	Fulfilling the genuine farmer, eligible hectares criteria defined by the Member States, other selection criteria could also be defined by the Member States	Achieving one or more of the CAP specific objectives; other selection criteria could be defined by the Member States
Time of application	With main application (15 th May)	Initial application before the first commitment year, then annually (15 th May)
Links with other measures	General reference to Article 13 advisory services	Beneficiaries must be allowed access to the knowledge and information they need to implement the scheme
Minimum spending requirement	No (but still being debated by the EU Council and Parliament)	At least 30% of EAFRD-budget for measures which address CAP Specific objectives d-f

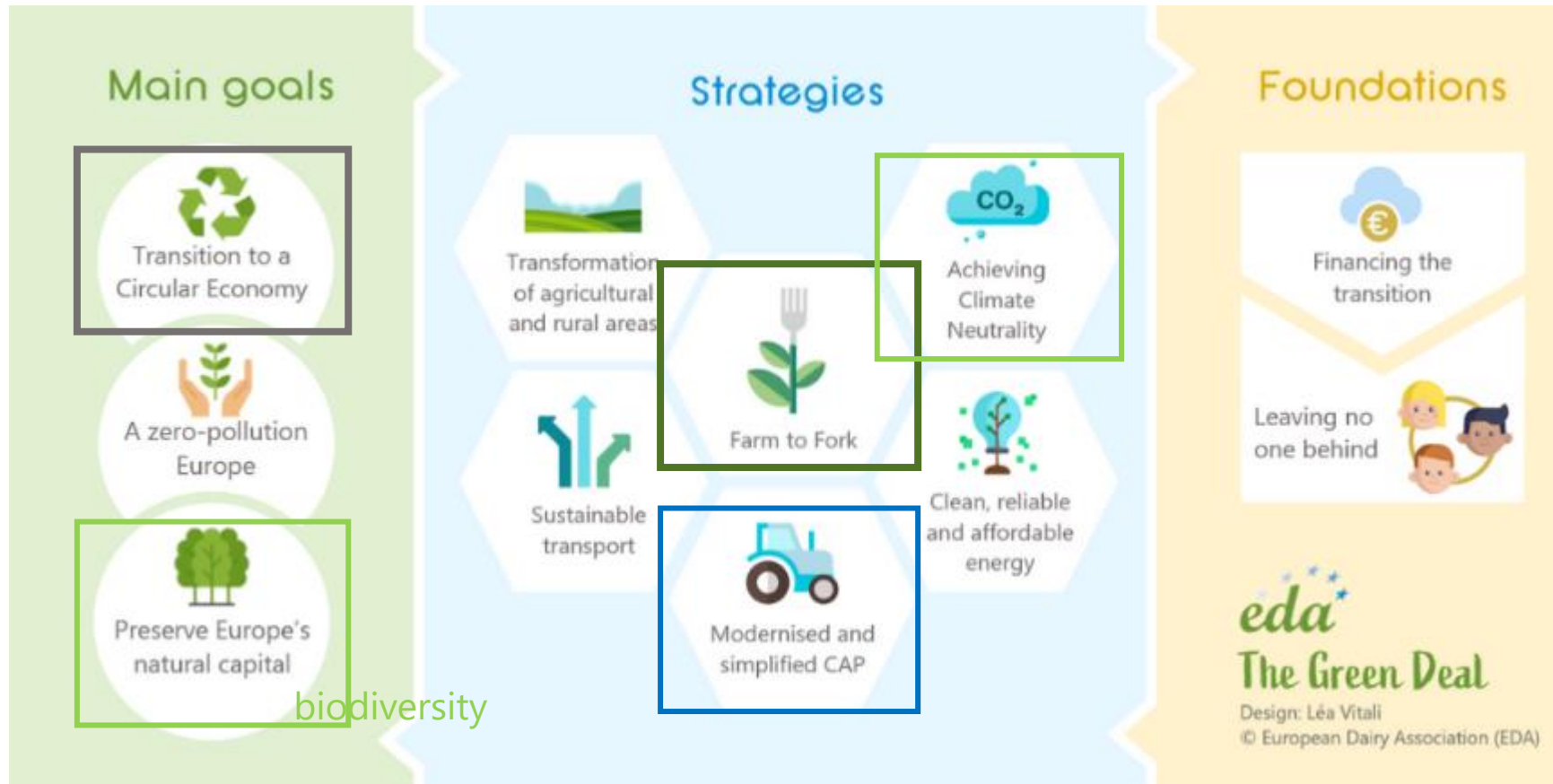


EDA et le 'Green Deal' de la Commission Européenne



Unsere EDA Antwort im Dez 2019 – proaktiv und konstruktiv

EDA et le 'Green Deal' de la Commission Européenne



Unsere Prioritaeten jetzt = 2+2(+1)

De la ferme à la table

notre alimentation, notre santé, notre planète, notre avenir

[Accueil](#) > [Stratégie](#) > [Priorités 2019-2024](#) > [Un pacte vert pour l'Europe](#)

Vers un système alimentaire de l'Union plus sain et plus durable, pierre angulaire du pacte vert pour l'Europe



Garantir que les Européens bénéficient d'une alimentation durable et abordable



Lutter contre le changement climatique



Protéger l'environnement et préserver la biodiversité



Une rémunération économique équitable dans la chaîne alimentaire



Renforcer l'agriculture biologique



L'**utilisation de pesticides dans l'agriculture** contribue à polluer les sols, l'eau et l'air.

La Commission prendra des mesures pour:

- **réduire de 50 %** l'utilisation et les risques des pesticides chimiques d'ici à 2030;
- **réduire de 50 %** l'utilisation de pesticides plus dangereux d'ici à 2030.



La **présence excessive de nutriments** dans l'environnement constitue une source importante de pollution de l'air, des sols et de l'eau, qui a des incidences néfastes sur la biodiversité et le climat. La Commission prendra des mesures pour:

- **diminuer d'au moins 50 % les pertes de nutriments** sans détérioration de la fertilité des sols;
- **diminuer le recours aux engrais d'au moins 20 %** d'ici à 2030.



Selon des estimations, la **résistance aux antimicrobiens**, liée à l'utilisation des antimicrobiens chez l'homme et l'animal, entraîne 33 000 décès par an dans l'UE. La Commission **réduira de 50 % les ventes d'antimicrobiens destinés aux animaux d'élevage et à l'aquaculture d'ici à 2030.**



L'**agriculture biologique** est une pratique respectueuse de l'environnement qu'il faut continuer de développer. La Commission encouragera le développement de l'agriculture biologique dans l'UE afin de **porter sa part à 25 % de la superficie agricole totale.**

Réaliser la transition: des choix éclairés et des gains d'efficacité



Mise en place d'un environnement alimentaire sain afin de faciliter le choix en faveur de la santé et de la durabilité

Selon des estimations, plus de **950 000** décès survenus dans l'UE en **2017** (soit un sur cinq) sont imputables à des régimes alimentaires peu sains.

Un régime alimentaire sain à base de végétaux réduit le risque de maladies potentiellement mortelles, ainsi que

les incidences de notre système alimentaire sur l'environnement.



Donner aux consommateurs les moyens de choisir des régimes alimentaires sains et durables grâce à l'étiquetage

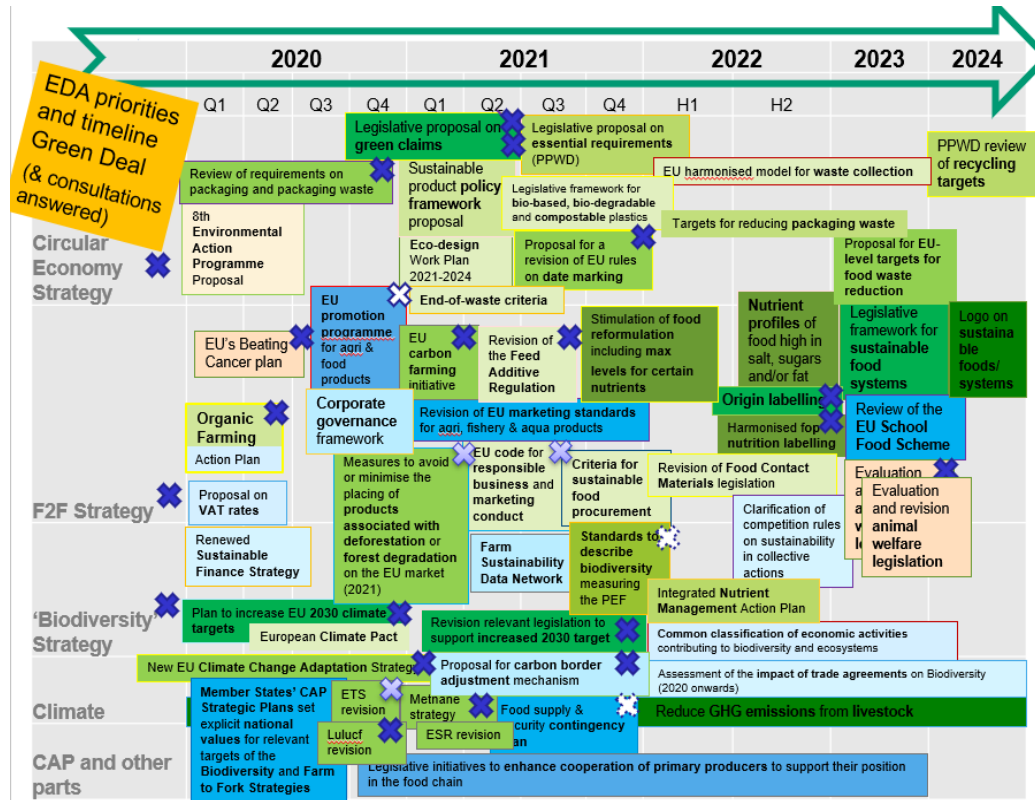
La Commission proposera un étiquetage nutritionnel harmonisé et préparera un **cadre pour l'étiquetage des denrées alimentaires durables** couvrant les aspects nutritionnels, climatiques, environnementaux et sociaux des produits alimentaires.



Intensifier la lutte contre le gaspillage alimentaire

Réduire de moitié le gaspillage alimentaire par habitant aux niveaux du commerce de détail et du consommateur d'ici à 2030: la Commission proposera des **objectifs** juridiquement contraignants pour réduire le gaspillage alimentaire dans l'ensemble de l'UE d'ici à 2023.

Où allons-nous?



Qui mène le voyage?





European Dairy Association @EDA_Dairy · Jul 4

At @EDA_Dairy Board @anne_bucher dir gen of @EU_Commission @EU_Health @Food_EU discussing with @mnalet @groupe_lactalis



anne Bucher

DMK Group, Conor Mulvihill 🗨️, Riitta Brandt and 2 others



Loi et logo sur le développement durable (3 piliers) en une loi générale sur l'alimentation

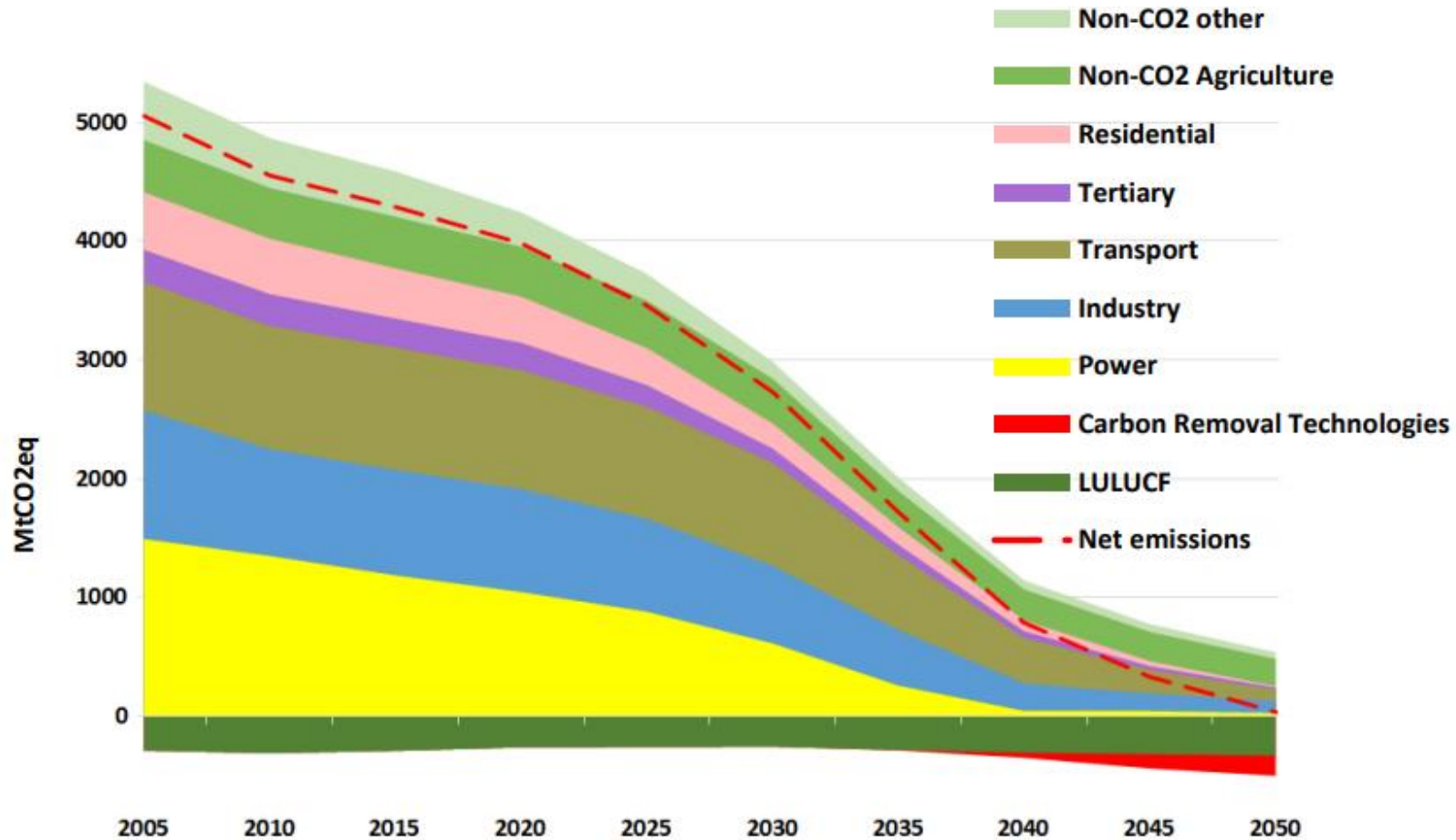


Les exigences environnementales et les opportunités pour les laiteries aujourd'hui

1. Notre chaîne : Comment nous produisons les produits laitiers, l'utilisation des terres
2. Au sein de nos laiteries
3. La réputation du lait et son image
4. Notre empreinte, et le rôle que nous avons pour notre planète



L'objectif de neutralité climatique 2050

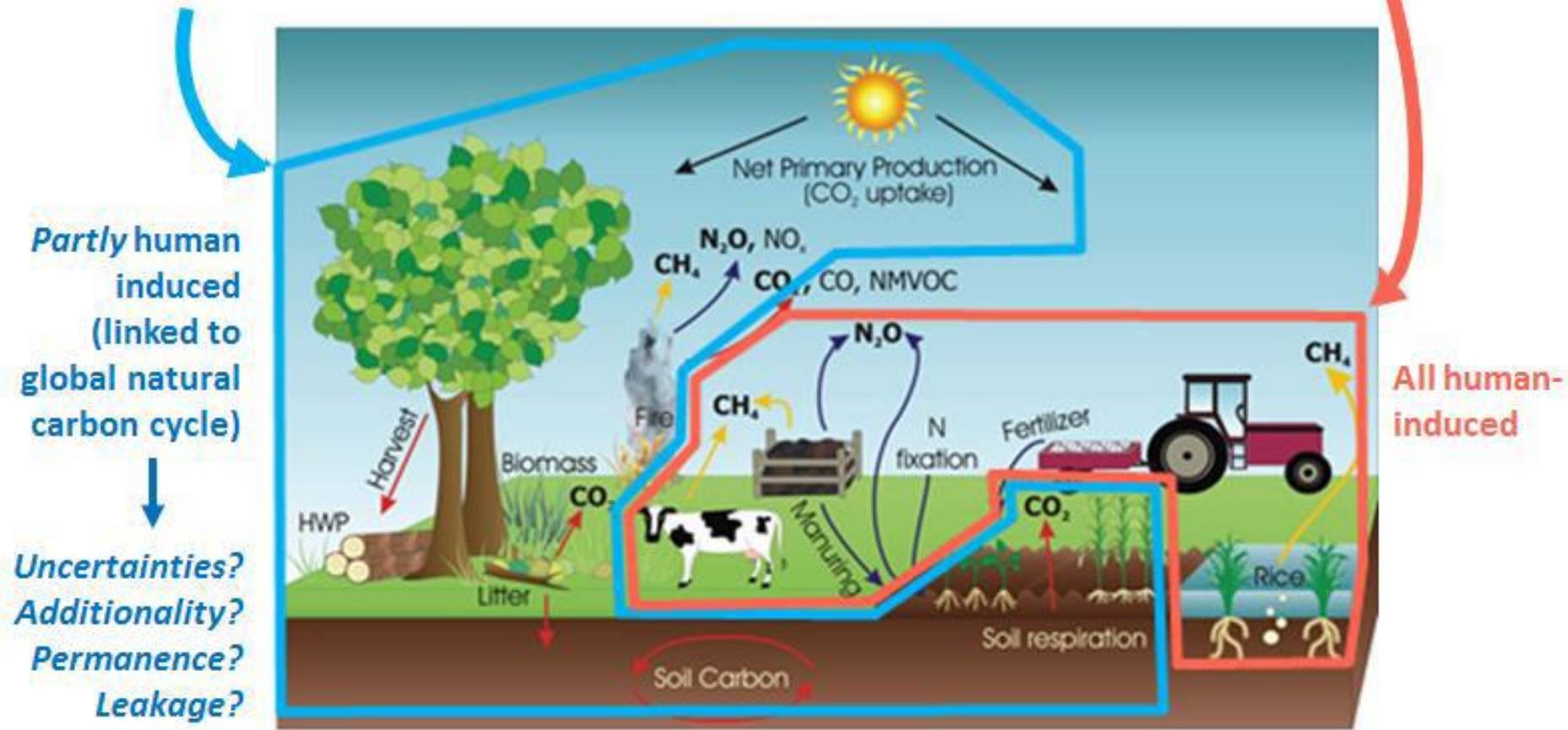


FOOD'S IMPACT ON CLIMATE



Land Use, Land Use Change and Forestry (LULUCF): CO_2

AGRICULTURE *non- CO_2*
(CH_4 , N_2O) – in the ESR

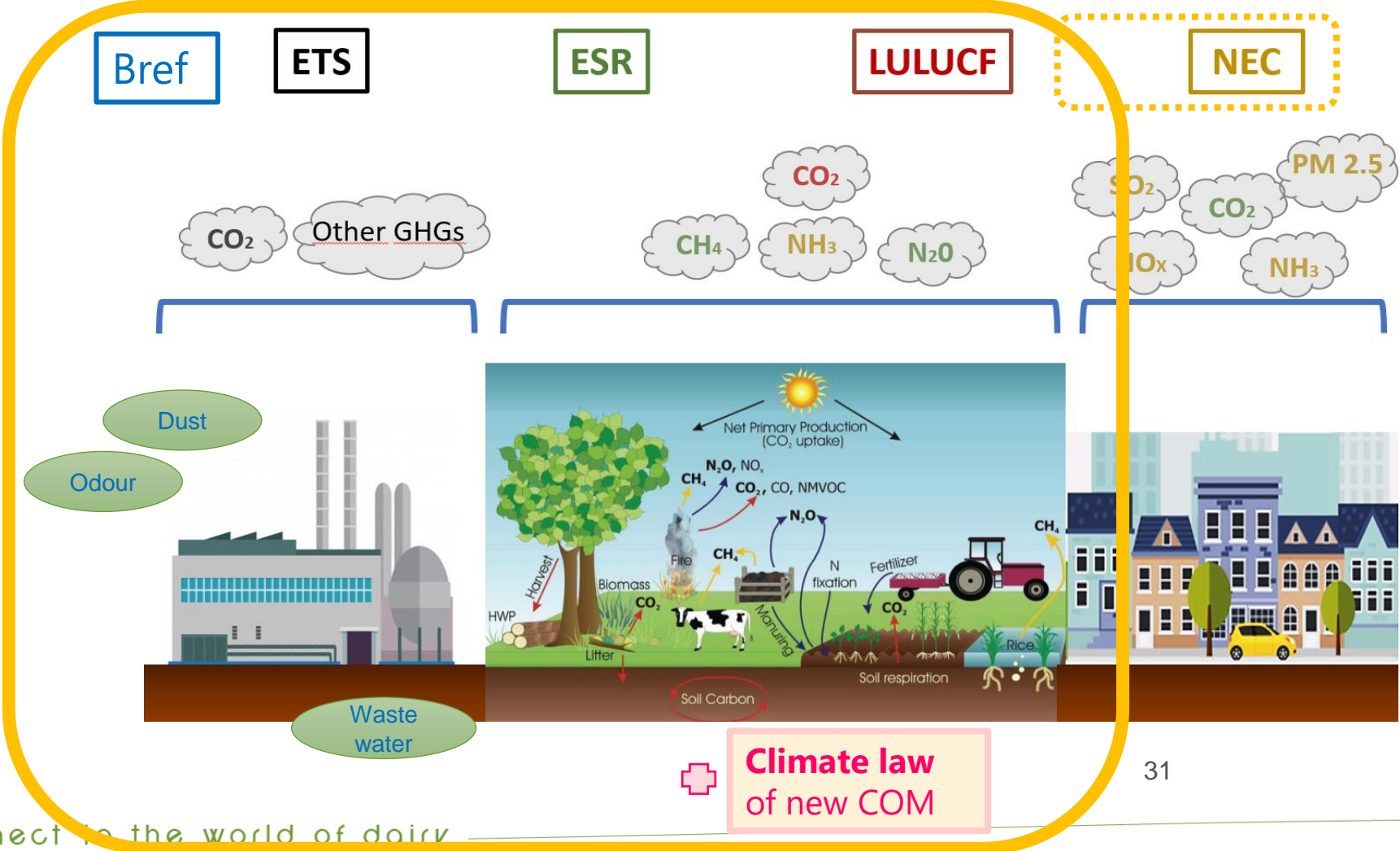


Partly human induced
(linked to global natural carbon cycle)

Uncertainties?
Additionality?
Permanence?
Leakage?

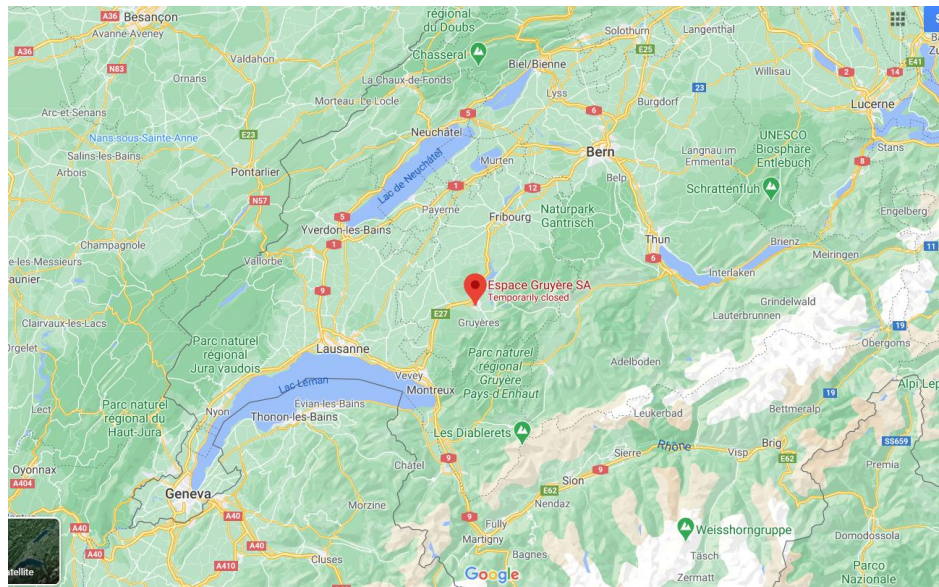
All human-induced

Législation en matière d'émissions pour le secteur laitier

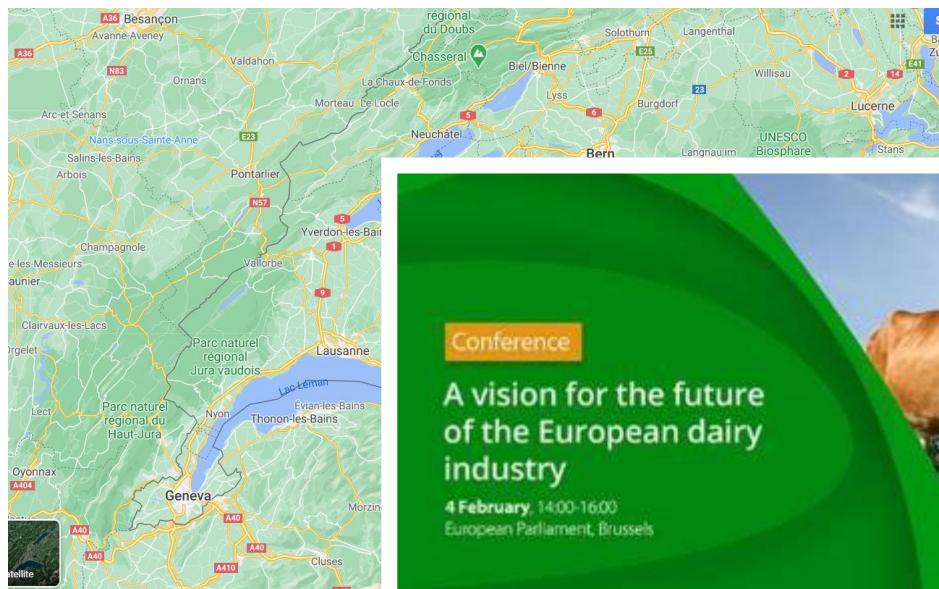


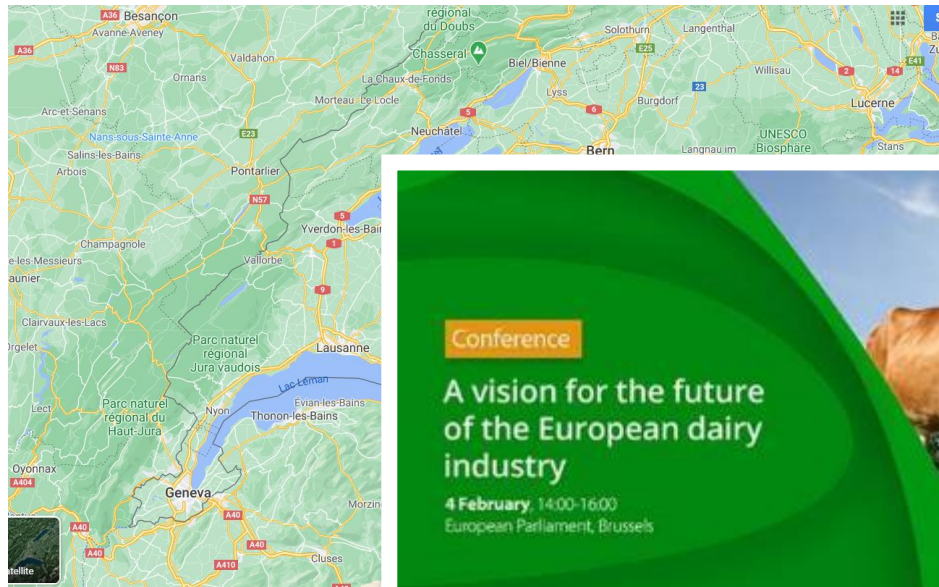
Plus: eau, biodiversité, sol, ...





Où (en)
sommes-
nous?





Conference

A vision for the future of the European dairy industry

4 February, 14:00-16:00
European Parliament, Brussels

SAVE THE DATE... DANONE WEXFORD - A GREEN FACTORY

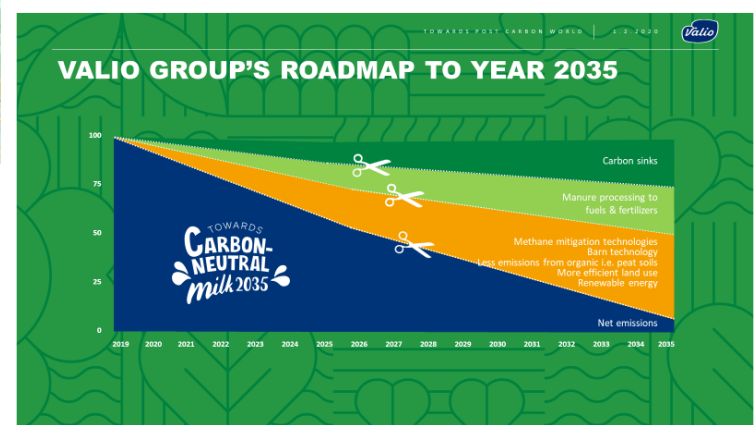
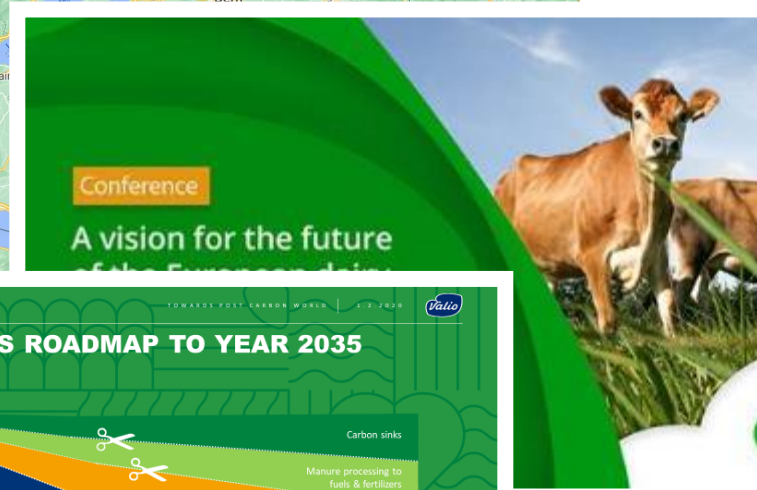
As a global food company, manufacturing in Wexford, Ireland, we rely on nature, agriculture and farmers to do our job. It is our mission and our responsibility to help fight climate change and contribute to achieving a decarbonized economy.

11 34

Join us to celebrate Danone Wexford's commitment towards sustainability and learn more about the journey to becoming a green factory.

Date: 4th March 2023
Time: 10am
Location: Danone Wexford, The Cove, Kesh, CO5 Y7E4
RSVP: DanoneWexford@danone.com





Join us to celebrate Danone Wexford's commitment towards sustainability and learn more about the journey to becoming a green factory.

Date: 27 March 2023
 Time: 9am
 Location: Danone Wexford, The Centre, Kesh, CO5 Y7E4
 RSVP: DanoneWexford@danone.com

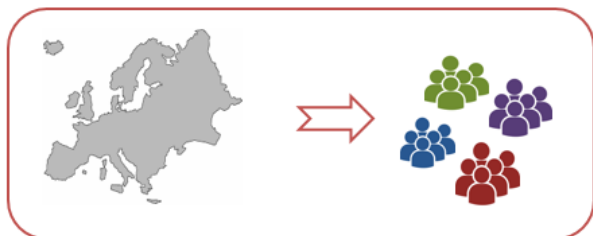


Notre approche

Le secteur laitier européen comme actuer engagé



Une alimentation saine et durable - l'importance des produits laitiers



VOUS/ votre FAMILLE



Un PAYS



L'EUROPE

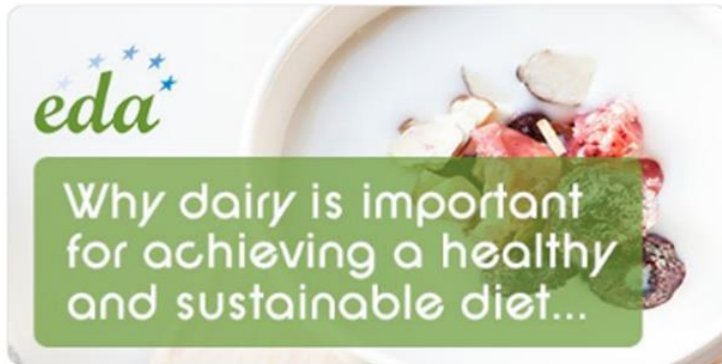


La PLANETE



European Dairy Association @EDA_Dairy · Jan 4

Recent studies have shown that #dairy products have a low #climate impact when balanced against their nutritional importance in a #healthy #diet. Check out our #Sustainability factsheet ► bit.ly/2P37y3R



14 retweets 23 likes



European Dairy Association @EDA_Dairy · Jan 10

Our #Dairy sector is continuously working on improving its long-term #sustainability and key to these efforts are the achievements of the @UN @SustDev #SDGs. Check out our #Sustainability factsheet ► bit.ly/2P9kzJg



1 retweet 4 likes

Un 'buzz' positif



European Dairy Association @EDA_Dairy · Jan 14

#Dairy provides #healthy #nutrition and contributes to safeguard #environmental #resources... Check out our #Sustainability factsheet ► bit.ly/2Mi3DBL




9 retweets 11 likes





Notre projet d'empreinte écologique (PEF)





 **eda** european dairy association   3 industry associations

      6 dairy processors

 1 retailer

 1 LCA consultant

    4 public and research bodies

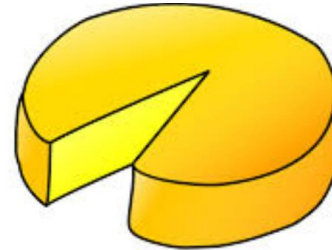
    **FEVE**
The European Container Glass Federation 3 packaging associations

Le PEF regarde l'ensemble de la chaine



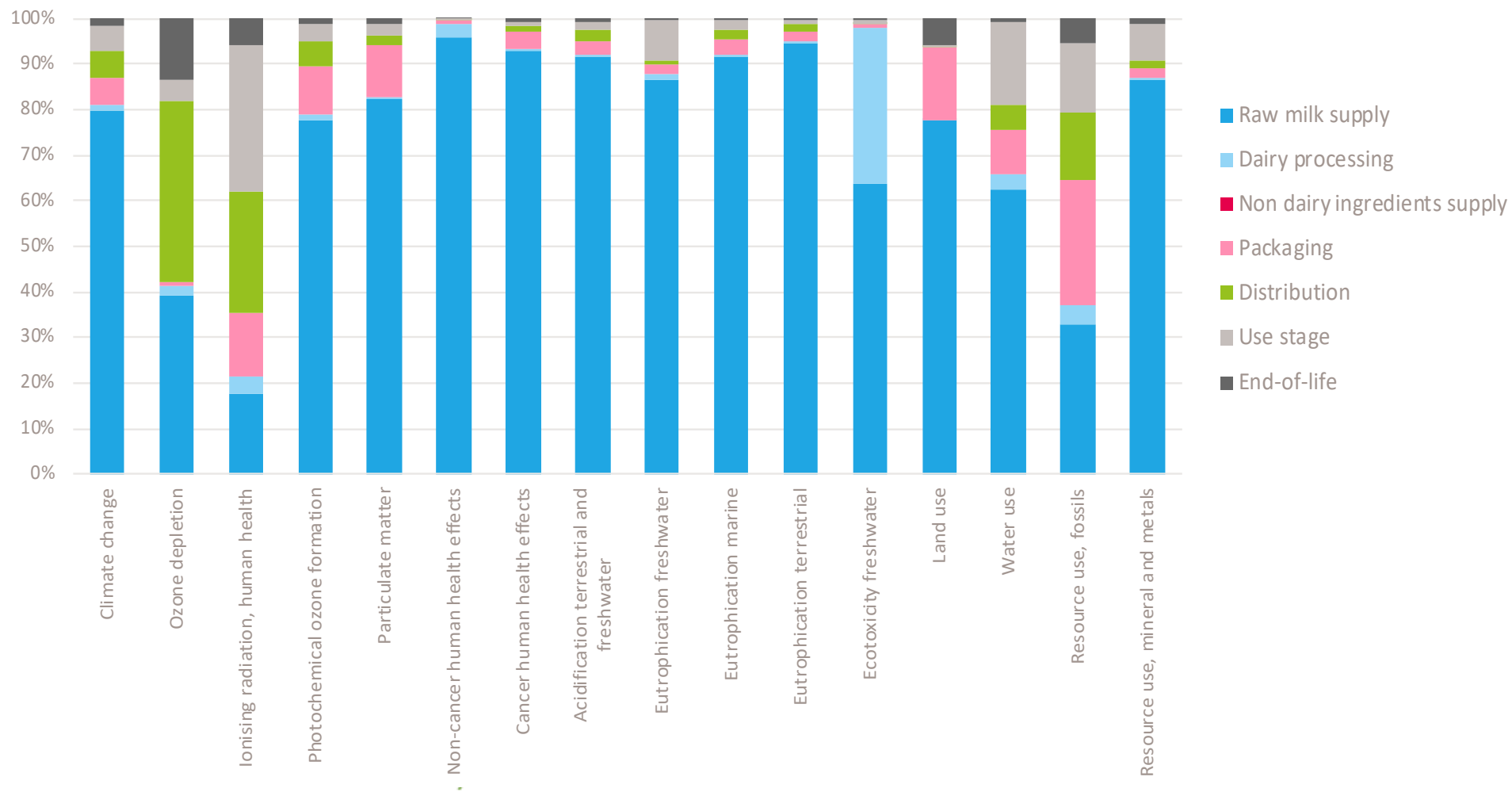
Champ d'application des PEFCR (PEF category rules)

- Lait de consommation
- Poudres de lactosérum
- Fromages
- Produits laitiers fermentés
- Produits de beurre

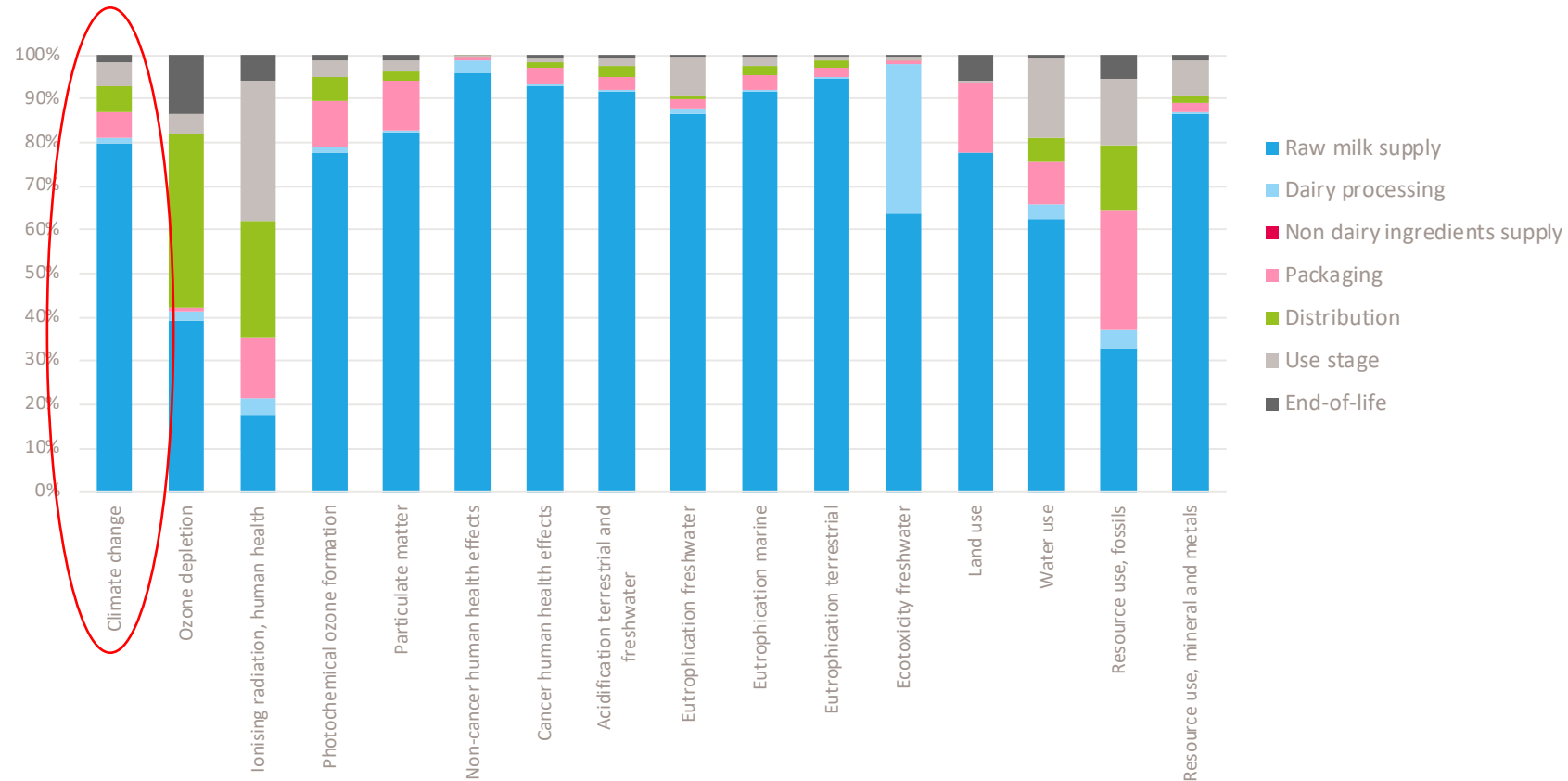


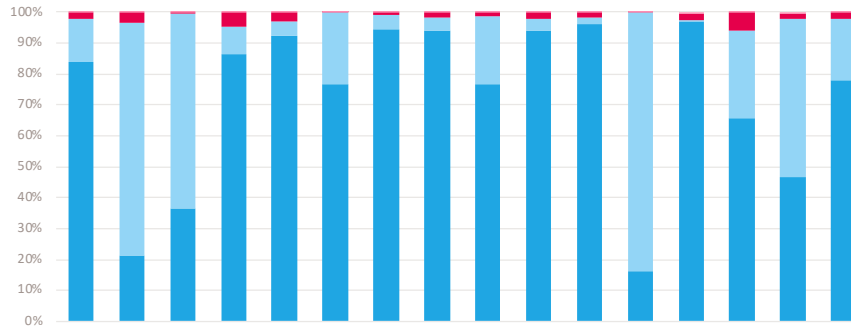
Toutes les sous-catégories s'appliquent:
pour le lait de **vache** et les produits dérivés

Profil PEF – Lait de consommation produit représentatif

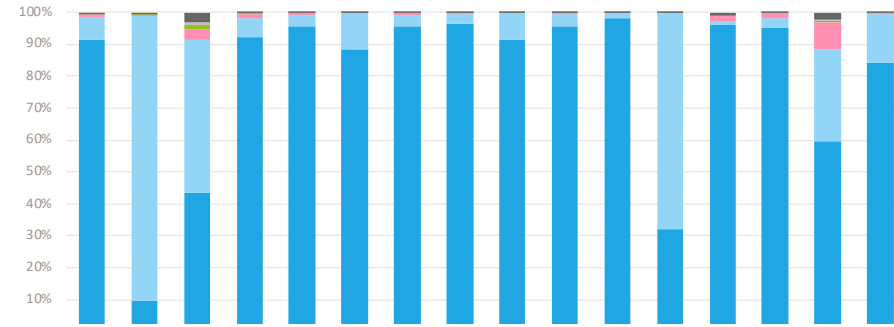


Distribution des parties des gaz à effet de serre dans la chaîne de production du lait de consommation

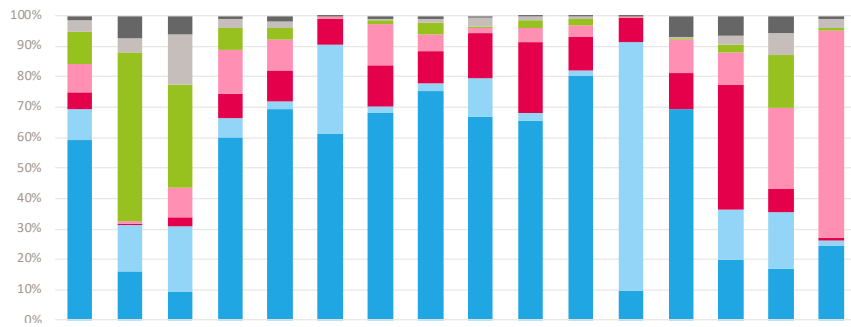




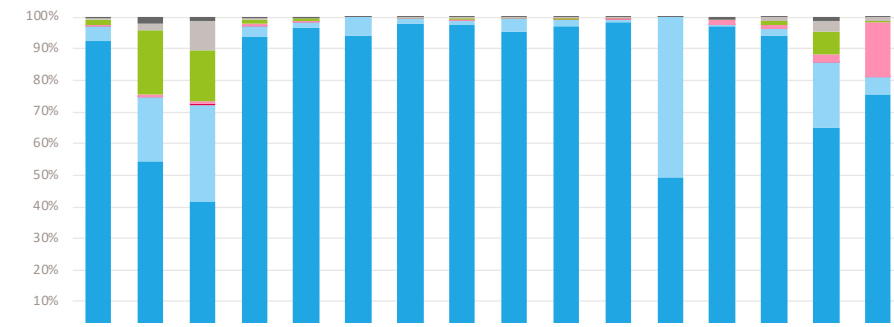
Poudres de lactosérum



Fromages



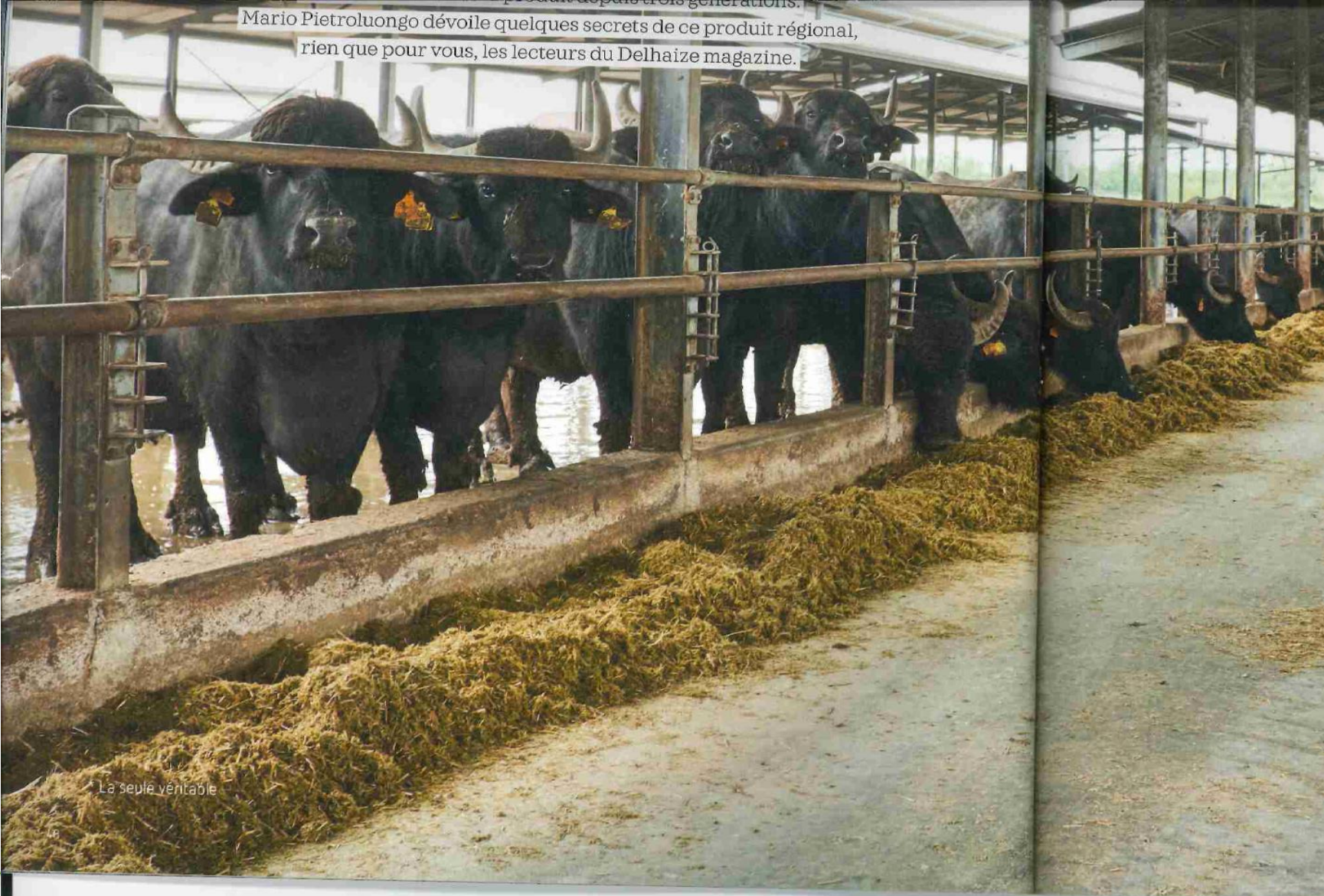
Produits laitiers fermentés



Produits de beurre

- Raw milk supply
- Dairy processing
- Non dairy ingredients supply
- Packaging
- Distribution
- Use stage
- End-of-life

... depuis trois générations.
Mario Pietroluongo dévoile quelques secrets de ce produit régional,
rien que pour vous, les lecteurs du Delhaize magazine.



La seule véritable

changement



... pour un secteur laitier toujours plus sain
et durable





Merci beaucoup!

Hélène Simonin

European Dairy Association (EDA)/ European Whey Processors Association (EWPA)

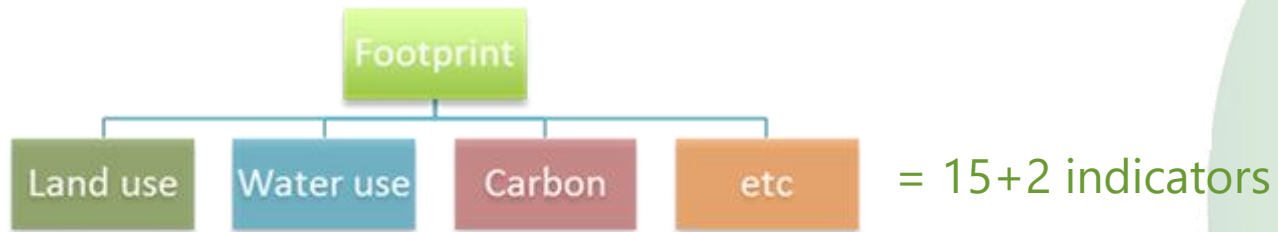
22-28, avenue d'Auderghem, 1040 Brussels

hsimonin@euromilk.org <https://www.euromilk.org/>



Annexe

Was ist ein Umweltfussabdruck?



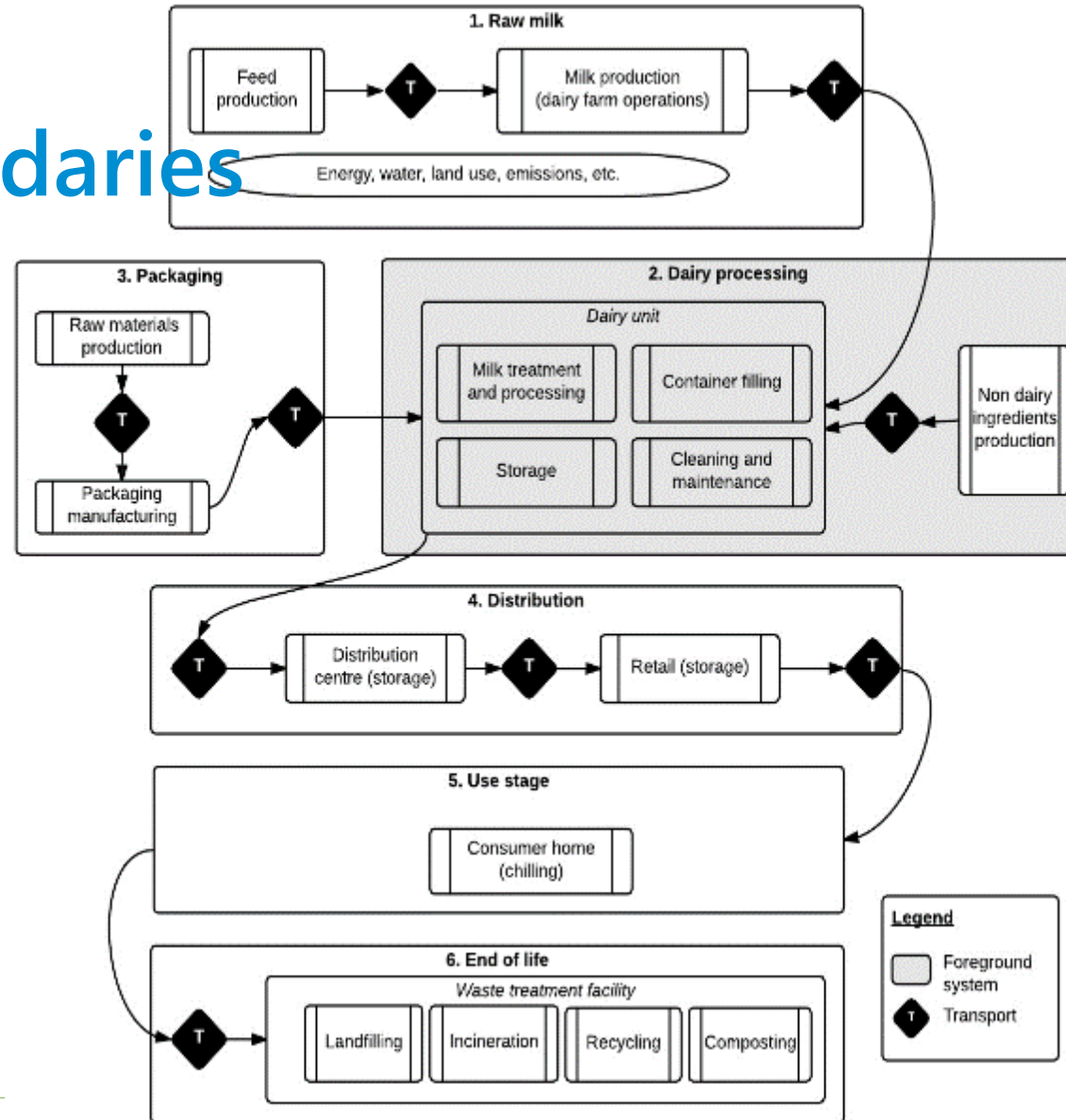
All chain included = wide information, to be credible and scientific

The one methodology = approved by EU Commission and member states, plus NGOs



System boundaries

Cradle-to-grave
except for "Dried
whey products"



Mandatory company-specific data

Dairy
processing
Non-dairy
ingredients (mass)
Packaging (mass
and volume)

Item	Complementary information	Unit
Input parameters		
Raw milk	Mass and dry matter content of FPCM	kg/y
Other dairy inputs	Mass and dry matter (DM) content of any other dairy input in the product's formulation (e.g. cream, skimmed milk, milk powder, whey, etc.)	kg/y
Chemicals	Mass and types of chemicals (cleaning agents and reactants) used in the dairy unit	kg/y
Refrigerants	Mass and types of refrigerants used in the dairy unit	kg/y
Energy	Amount and type of fuel (natural gas, fuel oil, diesel, biogas, etc.) for heat and electricity use (from grid, produced on-site) for all activities at the dairy unit, including storage at the local warehouse. Emissions (CO ₂ , NO _x , SO ₂ , particles) related to fuel combustion shall also be calculated and included (not included in secondary datasets for fuel production). Country specific values for energy content of combusted natural gas shall be used when available. IEA data can be used for that purpose.	kWh/y or MJ/y
Water	Volume of water used. A regionalized (i.e. minimally country-specific) water flow shall be used in the model.	m ³ /y
Output parameters		
Co-products	Mass and dry matter content of every co-product	kg/y
Wastewater	Volume, COD content of wastewater released to treatment	m ³ /y
Direct emissions	Amount of different direct emissions to air not due to energy use (e.g. refrigerants) and to water (e.g. PO ₄ ³⁻).	kg/y

Processes expected to be run by the company

Raw milk production (only for companies with direct access to dairy farmers such as cooperatives)

Raw milk transport to the dairy unit (only for companies with direct access to dairy farmers such as cooperatives)

Dairy processing (from raw milk delivery to packaged products)



Processes expected to be run by the company

Raw milk supply:
data to be
collected (inputs on



Farm inputs	Subtype	Comment
Included		
Mineral fertilisers	Nitrogen fertilizer	Including all N-containing fertilisers
	Phosphorus fertilizer	Including all P-containing fertilisers
	Potassium fertilizer	Including all K-containing fertilisers
	Lime	Including all Ca-containing fertilisers
Organic fertilisers	Manure	Only emissions from manure application should be accounted for
	Organic fertilizers	Any bio-based fertiliser, such as plant-based fertiliser, manure pellets, biochar.
Dairy cattle	Dairy cattle	Dairy cows (dry and lactating), calves, young stock until 1 year of age and young stock over 1 year, heifers.
Energy	Electricity	Country-specific (from grid) or produced on-site
	Diesel	Diesel used at farm
	Natural gas	Natural gas used at farm
	Other energy	Any other energy input such as propane, wood pellets, etc.
Feed	Compound feed	All types of compound feed (i.e. feed concentrate)
	Roughage	All roughage types
	Other feeds	All purchased other feeds, such as single ingredients, (wet) by-products from industry
Other	Bedding material	All types of bedding material used to house dairy cattle
	Pesticides	All pesticides, i.e. herbicides, insecticides, nematocides, fungicides
	Silage plastic	Packaging etc.
Water	Irrigation	On farm irrigation for feed crops. differentiate between ground, surface and tap water.
	Drinking and cleaning water	Differentiate between ground, surface and tap water.